

MONTHLY FEE SCHEDULE

Rhythm and Movement (45 min class).....	\$35.00
Pre-Ballet 1 (45 min class).....	\$35.00
Junior Jazz 1 (45 min class).....	\$35.00
Adapted Dance (45 min class).....	\$45.00
Pre-Ballet 2 (1 hr class).....	\$45.00

Ballet 1,2, 3, Modern A, D, Jr. Jazz 2, Inter. Jazz 1, Pre-Teen/Teen Ballet 1, Teen Modern, Stretch & Strength	1 hr./class
1 Class per week.....	\$50.00
2 Classes per week	\$95.00
3 Classes per week	\$130.00
4 Classes per week	\$155.00

Modern B,C	1.25 hrs/class
1 Class per week.....	\$60.00
2 Classes per week	\$100.00
3 Classes per week	\$135.00
4 Classes per week	\$160.00

Ballet 4, 5 Modern E, F, Int. Modern 1, Int. Jazz 2/3, Int. Jazz 4, Teen Ballet 2, Adult Ballet/Modern/Jazz	1.25 hrs/class
1 Class per week	\$60.00
2 Classes per week	\$100.00
3 Classes per week	\$140.00
4 Classes per week	\$165.00
5 Classes per week	\$185.00

Ballet 6, 7, 8, 9, 10, Adv. Ballet, Int. Modern 2, Adv. Modern, Adv. Jazz	1.5 hrs./class
1 Class per week.....	\$70.00
2 Classes per week	\$115.00
3 Classes per week	\$150.00
4 Classes per week	\$175.00
5 Classes per week	\$195.00
6 Classes per week	\$210.00
7 Classes per week	\$220.00

Students taking pointe classes will be billed the equivalent of one extra class per week, which will cover all pointe classes scheduled for the level in which the student is enrolled.

ROYAL ACADEMY OF DANCE EXAM CLASSES FEES

Grades Examination fees and tuition	
Grade 1	\$460
Grade 4	\$550
Grade 5	\$550

The following grades are combined with regular program classes. Students who **take** the exam pay an extra exam fee/extra classes after Christmas fee as follows:

Grade 2	\$210
Grade 3	\$220
Grade 6	\$230

Vocationals

Instruction fees (where enrolment is at least 3 students – see note below for fees when less than 3 students):

Intermediate Foundation	\$560
Intermediate	\$600
Advanced Foundation.....	\$600
Advanced 1	\$600
Advanced 2	\$600

For Vocational levels where enrolment is less than 3 students: If 2 enrolled, fees will be surcharged at \$125/student; if there is only one student, instruction fees will be surcharged at \$250.

Vocational Exam fees for those who wish to take the exam will be collected in November. These amounts are approximate:

Intermediate Foundation.....	\$108
Intermediate	\$118
Advanced Foundation	\$129
Advanced	\$134
Advanced 2	\$144

INTENSIVE DAY PROGRAM FEES

Intensive Day Program students in high school must take the full program (Tuesday through Friday), plus Wednesday evening Modern 5:00 pm starting December. They may take, without additional charge, one additional class per week.

Monthly fees for Day Program are \$250.00

Notes: (1) No reduction in fees will be made for Day Program students who elect not to take pointe classes.

(2) Additional classes (ie over and above the additional class included in the \$250 monthly fee, will be charged at \$2.50 per class (ie \$10/month for 4 additional classes per month).

Post Secondary students taking Adult Classes: \$40/month for 1 class per week

ENSEMBLE FEES

Payable in September \$140

COMPANY FEES

May be paid in 2 installments, Sept. 1 Nov 1

Junior Company

Ballet focus	\$245
Modern focus	\$245
Dual focus	\$360

Senior Apprentice Company

Ballet focus	\$270
Modern focus	\$270
Dual focus	\$395

Senior Company

Ballet focus	\$295
Modern focus	\$295
Dual focus	\$435

Combo of Senior

and Senior App. (dual) \$425

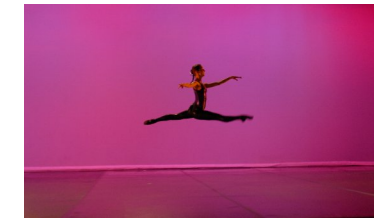
SUPPLEMENTARY FEES

Membership	\$15 per student
Or	\$20 per family
Registration fee	\$15 per student
Yearbook	\$25 per family
Childcare	\$8 per family

(R&M, Pre-Ballet 1,2, Ballet 1,2, Mod. A,B,C, Jr. Jazz 1)

Costume fees

R&M, P.B.1, 2, B.1	\$60
Ballet 2, 3, Modern, Jazz	\$65
Ballet 4 and up	\$85



REGISTRATION INFORMATION

- When mixing classes at different levels, the higher fee amount prevails;
- There is a non-refundable membership Fee (\$15 / student, \$20 / family) and registration fee (\$15 /student);
- Registration is on a first come, first served basis; payment of registration fees reserves a spot.
- Fees may be paid by pre-authorized monthly direct withdrawal, cash, or MasterCard. Pre-authorized payment is preferred as MasterCard charges us for each transaction;
- 5% Discount for paying fees in full for the year;
- Family discounts available;
- One month's notice is required for withdrawal from classes;
- Discount fees for University students participating in Adult classes.
- All classes must meet minimum enrollment or the class may be cancelled or combined with another class.
- \$5 per month discount for students dancing on Mondays (due to stat. holidays). Only applies to students taking one or two classes / week.

FUNDRAISING

(Excludes families in Adult non performing, Adapted Dance and all first time students)

Each returning family to the YBCS is assigned a fund raising commitment, except for the students mentioned above. These funds are used to sustain the school's operations. No money from these commitments is used towards the Company or the RAD programme.

Your family's fund raising commitment is based on the number of classes taken per week by all members of your family who are students of YBCS.

1 Class per week	\$60 per family per year
2 Classes per week	\$120 per family per year
3 Classes per week	\$180 per family per year
4 Classes per week	\$240 per family per year
5 Classes per week	\$300 per family per year

(maximum)

Fundraising Options:

Funds may be raised by working bingos (\$60 value per bingo), selling cases of chocolates (\$30 value per case sold), or payout either in a lump sum or divided evenly with monthly fees. You may also sew costumes, build sets or do maintenance projects for credit on your account. Once your commitment is met you will not have to do any other fundraising for the year.

Please indicate your choice of fundraising method on your registration form.

Notes on Bingos

Bingos are held at Regina Bingo Palace, 190 Broad Street N., every 4th Wednesday evening from 5:15 pm until 12:15 am. Parking is free and the hall is smoke-free. You may bring your own supper or purchase it at the Bingo Palace canteen.

Once you have worked off your fundraising requirement, you may work additional bingos which will be credited to your child's account. If you wish to take advantage of this, please wait until 3½ weeks prior to Bingo Wednesday before signing up in any available slots. (This is to allow those who need to meet their fundraising needs the opportunity to sign up first.)

Sign up sheets are posted in the outer office. Please sign-up in person or by calling the YBCS office at 352-9908 (Mon.-Fri. between 9am-12 pm). Sign up sheets will remain available until after the Friday 1½ weeks prior to the Wednesday Bingo. Additions and/or deletions after that time may be done by calling Doug Dale-Johnson at 757-0505. Questions pertaining to credits and/or accounts should be directed to the YBCS office at 352-9908.

Any person who signs up to work a Bingo but cancels 1½ weeks prior to the Bingo date without providing a replacement worker will be charged \$90.00.

The Bingo hall occasionally offers YBCS to work at additional Bingos. When this occurs, it is usually on short notice and on weekends or nights other than Wednesday. If you wish to be given the opportunity to work at these, please advise Doug Dale-Johnson at 757-0505.

Youth Ballet Company of Saskatchewan

2009-2010

Fees

Fundraising Registration Information

352-9908

585-2565 fax

ybc@sasktel.net

www.youthballet.com

1106 McNiven Avenue
Regina, Sask. S4S 3X3